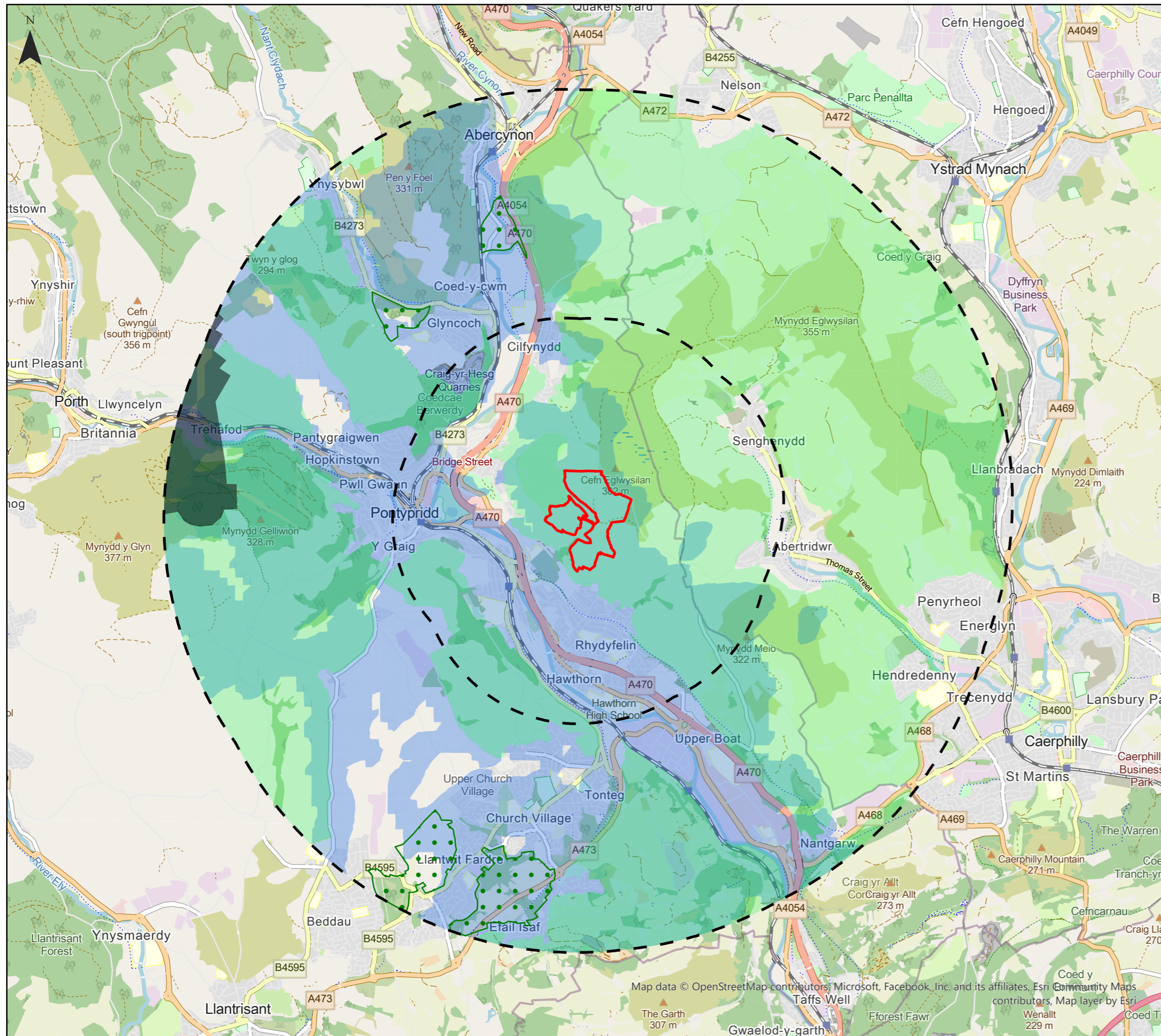





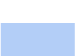


Glyn Taff Solar Farm Landscape Designation with Zone of Theoretical Visibility Figure 4.2



Key

-  Development Boundary
-  2km, 5km Study Area
-  Green Wedge
-  Special Landscape Areas
-  The Registered Landscapes of Outstanding and of Special Interest in Wales
-  Zone of Theoretical Visibility (ZTV)

Neo Office Address:
Wright Business Centre, 1 Lonmay Road, Glasgow, G33 4EL



Contains Ordnance Survey data © Crown copyright and database right 2019

0 1.25 2.5 5 Kilometers

Map data © OpenStreetMap contributors, Microsoft, Facebook, Inc. and its affiliates, Esri Community Maps contributors, Map layer by Esri

Date: 24/02/2025
Drawn By: Craig Laird
Scale (A3): 1:50,000
Drawing No: NEO01437/0551/A

