


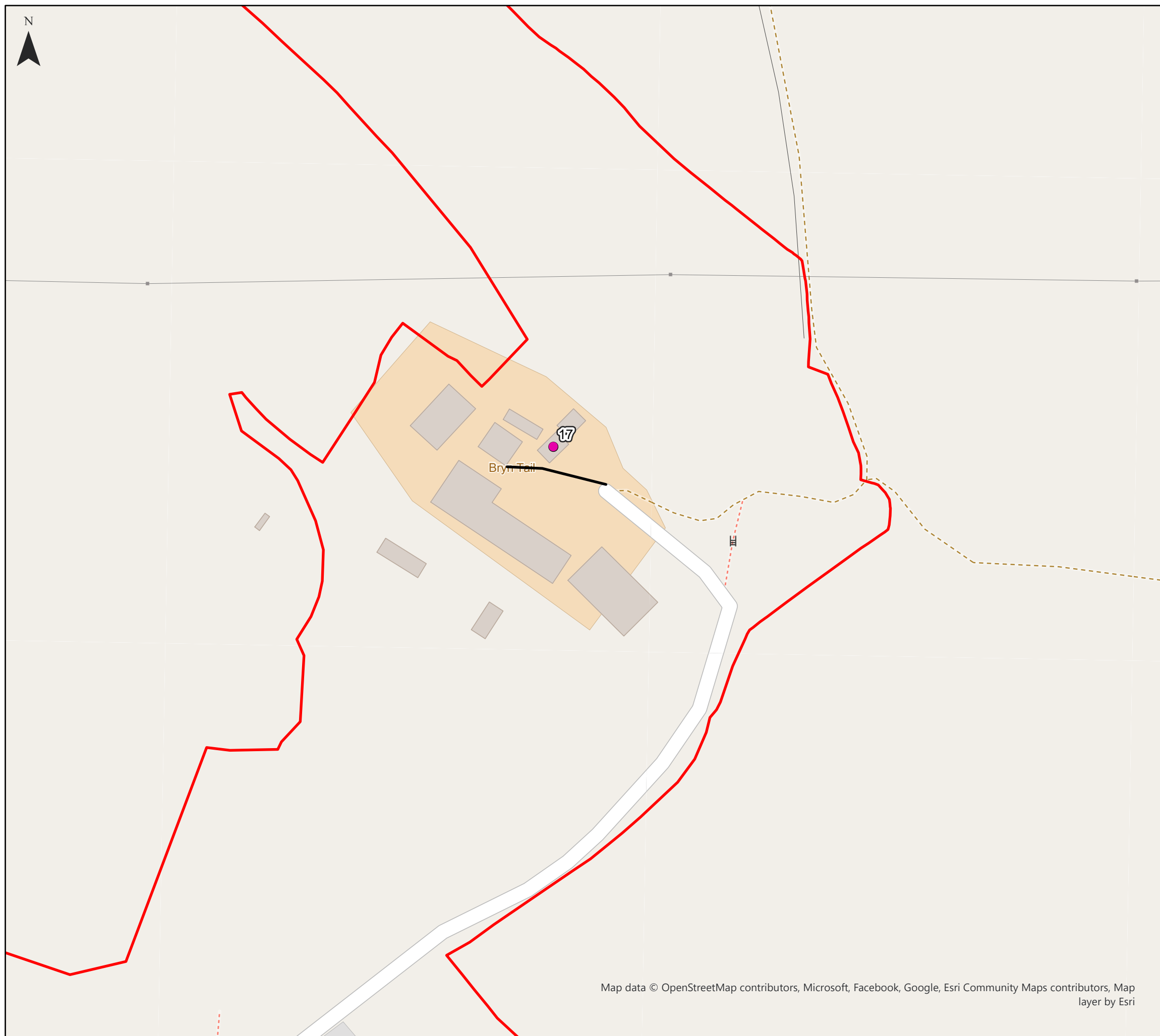


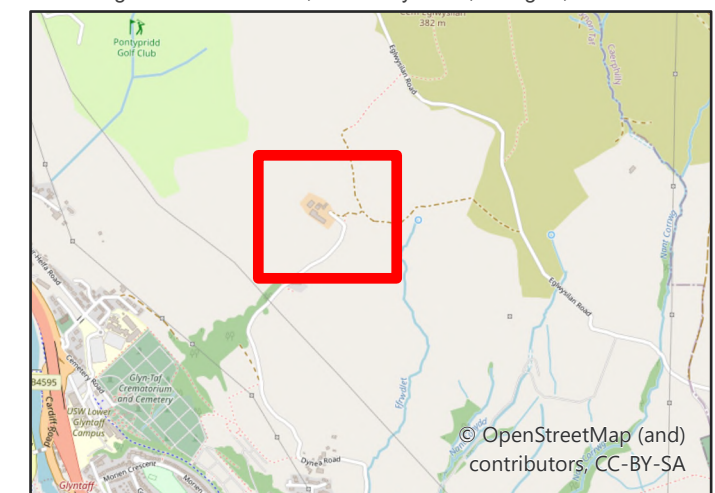
# Glyntaff Solar Farm Noise Mitigation Map Figure 8.2

## Key

-  Development Boundary
-  Noise Sensitive Receptors
-  Temporary Acoustic Barrier



Neo Office Address:  
Wright Business Centre, 1 Lonmay Road, Glasgow, G33 4EL



Map data © OpenStreetMap contributors, Microsoft, Facebook, Google, Esri Community Maps contributors, Map layer by Esri

0 0.03 0.05 0.1 Kilometers

Date: 17/02/2025  
Drawn By: David Thomson  
Scale (A3): 1:1,500  
Drawing No: NEO01437/0461/A

