



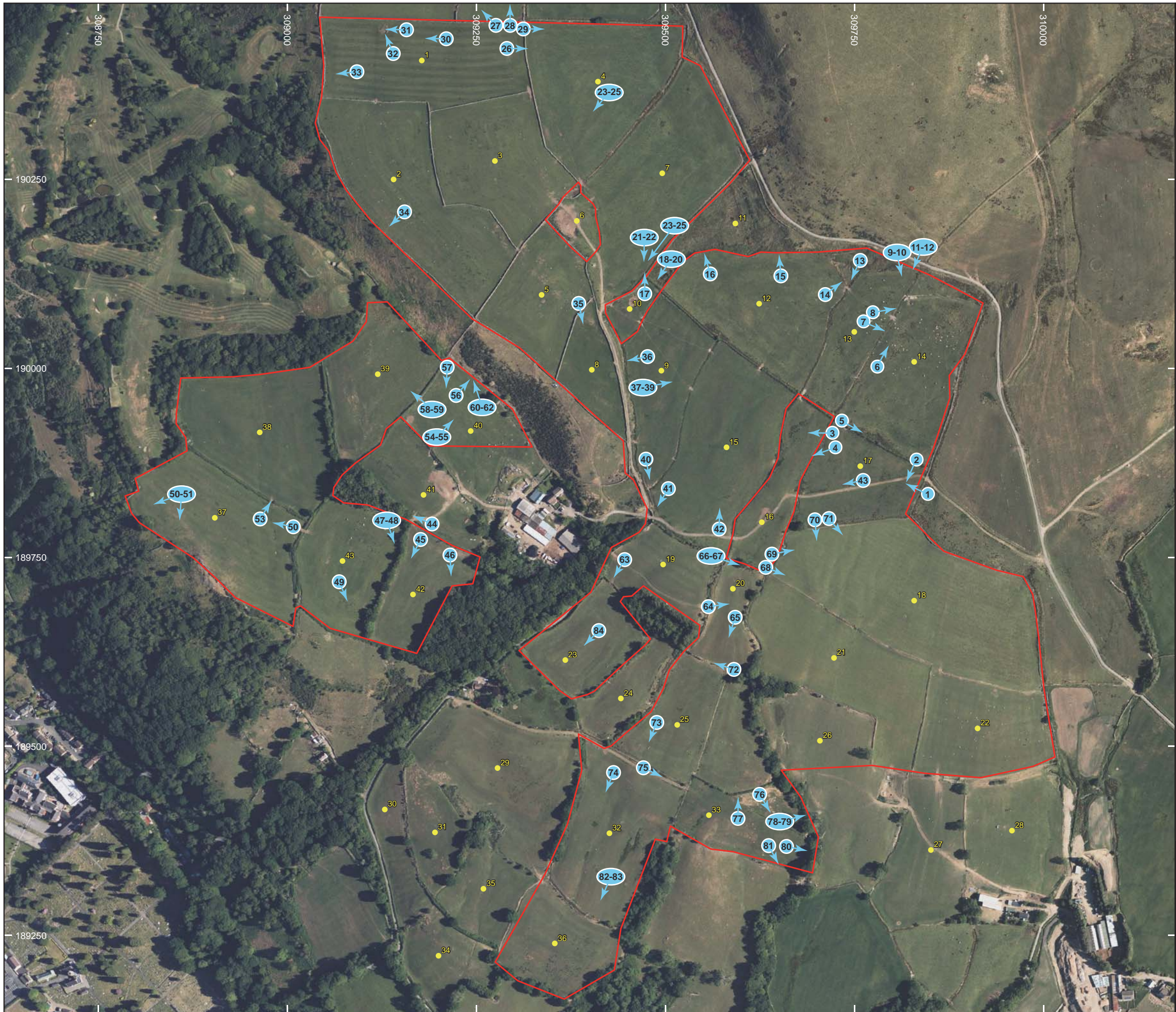
Appendix 10C – Photographic Register



Photo number / Plate	Direction Camera Facing	Field	Description	File Name
1	W	17	Raised trackway across Field 17 and views across Pontypridd	IMG-2431
2	S	17	Entrance gate in eastern dry stone wall boundary of Field 17	IMG-2432
3	W	17	Views across western boundary of Field 17	IMG-2434
4	SW	17	Views across southwestern corner of Field 17	IMG-2435
5	E	17	Boundary bank between Field 17 and Field 14	IMG-2437
6	N	14	View along western boundary of Field 14	IMG-2440
7	E	13	View across boundary ditch between Field 13 and Field 14	IMG-2442
8	NE	13	View of boundary ditch between Field 13 and Field 14	IMG-2443
9	W	13	Views of Flatholm and Steepholm across Field 14	IMG-2445
10	W	13	Views of Flatholm and Steepholm across Field 14	IMG-2446
11	SW	13	Views along eastern boundary of Field 13, possible chimney in distance (lining up with the two transmission towers)	IMG-2447
12	N	13	Views along eastern boundary of Field 13, possible chimney in distance (lining up with the two transmission towers)	IMG-2449
13	N	13	View along western boundary of Field 13	IMG-2451
14	NW	13	Close up of stratigraphy at entrance to Field 13	IMG-2454
15	N	12	View across Field 11 towards stone boundary along Eglwysilan Road	IMG-2457
16	NW	12	Possibly mining/quarrying, bald area of mountain north of Eglwysilan Road	IMG-2458
17	N	10	Possibly mining/quarrying, bald area of mountain north of Eglwysilan Road, view across Field 7	IMG-2459
18	S	10	Earthworks on The Garth	IMG-2461
19	S	10	Earthworks on The Garth - zoomed	IMG-2462
20	S	10	Earthworks on The Garth - zoomed	IMG-2463
21	SW	10	Boundary walls along Fields 9 and 10 (front, left) and Field 8 (right)	IMG-2465
22	SW	10	Boundary walls along Fields 9 and 10 (front, left) and Field 8 (right)	IMG-2466
23	W	10	View across junction of boundaries of Fields 5, 7, 8 and 10	IMG-2468
24	W	10	Sub-circular dip in field. Possibly quarrying	IMG-2469
25	W	10	Sub-circular dip in field. Possibly quarrying	IMG-2470
26	N	1	Sheep-creep' in boundary wall between Fields 1 and 4	IMG-2471
27	N	1	View from northern boundary of Field 1	IMG-2473
28	NW	1	View from northern boundary of Field 1	IMG-2474
29	E	1	View of Field 4 from northeastern corner of Field 1	IMG-2477

30	W	1	View towards Trehafod - tower/stack visible	IMG-2478
31	W	1	Pile of stone, varying sizes; possible quarrying in Field 1	IMG-2480
32	NW	1	Pile of stone, varying sizes; possible quarrying in Field 1	IMG-2481
33	W	1	View towards Trehafod - tower/stack visible	IMG-2483
34	NW	2	View towards Pontypridd	IMG-2484
35	S	8	Overview of Field 8, The Garth in background	IMG-2485
36	S	9	Sheep-creep' in boundary wall between Field 8 and Field 9	IMG-2488
37	W	9	Round concrete drainage access structure with square 'Clark Drain Pedestrian' cast iron cover	IMG-2489
38	W	9	Round concrete drainage access structure with square 'Clark Drain Pedestrian' cast iron cover	IMG-2491
39	W	9	Round concrete drainage access structure with square 'Clark Drain Pedestrian' cast iron cover	IMG-2492
40	S	9	Gate at end of partly tarmacked track along southern edge of Field 9	IMG-2493
41	SE	9	Culvert through wall in southeastern corner of Field 9	IMG-2494
42	N	15	Overview of Field 15 towards Eglwysilan Mountain	IMG-2496
43	S	17	Culvert in centre of Field 17	IMG-2497
44	NNW	41	Boundary bank and wall at corner of Fields 41-43	IMG-2499
45	S	41	Views of The Garth (back, left) and Treforest (middle, right)	IMG-2502
46	W	41	Views of Treforest across field 42, showing University of S. Wales (Centre)	IMG-2504
47	SE	43	Boundary bank and wall between Field 41 and Field 43	IMG-2507
48	SE	43	Boundary bank and wall between Field 41 and Field 43	IMG-2508
49	S	43	Views across Treforest towards The Garth and Flatholm (back)	IMG-2510
50	NW	37	Overview of Field 37	IMG-2513
51	W	37	Views towards Pontypool and Pantygraigwen	IMG-2514
52	SW	37	Views towards Treforest, showing University of S. Wales (Centre)	IMG-2515
53	N	37	Overview of Field 38, with sheep	IMG-2516
54	NE	40	Exposure of bedrock, possible cave/shelter	IMG-2518
55	NE	40	Exposure of bedrock, possible cave/shelter	IMG-2519
56	SE	40	Slab of stone in Field	IMG-2521
57	SE	40	Overview of Field 40 and Bryn Tail farm	IMG-2523
58	W	40	Close up of gate to Field 39 in disrepair	IMG-2526
59	W	40	Overview of Field 39	IMG-2528
60	NW	40	Pile of stone north of Field 40, possibly being used to build/repair stone wall to west	IMG-2529

61	NW	40	Pile of stone north of Field 40, possibly being used to build/repair stone wall to west	IMG-2530
62	NW	40	View of hillside north of Field 40	IMG-2531
63	SW	19	Views across Field 23, with Treforest Tinplate works in centre distance	IMG-2532
64	S	20	Views of St Ilan's Church across Field 20	IMG-2533
65	S	20	Views across Field 20	IMG-2534
66	E	20	Northern boundary of Field 20: wall and bank	IMG-2536
67	E	20	Northern boundary of Field 20: wall and bank	IMG-2537
68	SE	16	View across Field 18 across Treforest and Nantgarw towards Steepholm	IMG-2538
69	NE	16	View across Field 18	IMG-2539
70	W	17	View across Field 18	IMG-2540
71	SW	17	View across Field 18	IMG-2543
72	NW	25	View along field boundary (bank/terracing) between Field 20 and Field 25	IMG-2545
73	SW	25	Relict Field boundary (bank and ditch) crossing Field 25	IMG-2546
74	SW	32	Overview of Field 32	IMG-2547
75	NE	32	Northern stone wall boundary between Field 25 and 32	IMG-2549
76	S	33	Overview of Field 33 and views towards The Garth	IMG-2552
77	N	33	public footpath sign on northern boundary fence	IMG-2553
78	E	33	Public footpath route through ravine from Field 33 to Field 26	IMG-2555
79	E	33	Public footpath route through ravine from Field 33 to Field 26	IMG-2557
80	E	33	View of Field 26 across ravine from Field 33	IMG-2560
81	W	33	Views towards Field 27	IMG-2561
82	SW	32	Views of Field 36	IMG-2565
83	NW	32	Views of Field 36	IMG-2566
84	W	23	Overview of Field 23, with University of S. Wales and Newbridge Beam Engine (back)	IMG-2567



Legend

- Site extent
- Field Number
- ➔ Photo location, number & direction

Code: RR1382	Prepared by: H.Sims
Name: Glyn Taff	Approved by: R.Morgan-James
Status: Walkover Survey	Date: 07/08/2024
Revision: 1.0	Scale: 1:5,000 @ A3



Figure 1 - Photograph locations and directions.

Project Photographic Gazetteer

Page 1 of 6



Plate 1 - Raised trackway across Field 17 and views across Pontypridd



Plate 2 - Entrance gate in eastern dry stone wall boundary of Field 17



Plate 3 - Views across western boundary of Field 17



Plate 4 - Views across southwestern corner of Field 17



Plate 5 - Boundary bank between Field 17 and Field 14



Plate 6 - View along western boundary of Field 14



Plate 7 - View across boundary ditch between Field 13 and Field 14



Plate 8 - View of boundary ditch between Field 13 and Field 14



Plate 9 - Views of Flatholm and Steepholm across Field 14



Plate 10 - Views of Flatholm and Steepholm across Field 14



Plate 11 - Views along eastern boundary of Field 13, possible chimney in distance (lining up with the two transmission towers)



Plate 12 - Views along eastern boundary of Field 13, possible chimney in distance (lining up with the two transmission towers)



Plate 13 - View along western boundary of Field 13



Plate 14 - Close up of stratigraphy at entrance to Field 13



Plate 15 - View across Field 11 towards stone boundary along Eglwysilan Road

Page 2 of 6



Plate 16 - Possibly mining/quarrying, bald area of mountain north of Eglwysilan Road



Plate 17 - Possibly mining/quarrying, bald area of mountain north of Eglwysilan Road, view across Field 7



Plate 18 - Earthworks on The Garth



Plate 19 - Earthworks on The Garth - zoomed



Plate 20 - Earthworks on The Garth - zoomed



Plate 21 - Boundary walls along Fields 9 and 10 (front, left) and Field 8 (right)



Plate 22 - Boundary walls along Fields 9 and 10 (front, left) and Field 8 (right)



Plate 23 - View across junction of boundaries of Fields 5, 7, 8 and 10



Plate 24 - Sub-circular dip in field. Possibly quarrying



Plate 25 - Sub-circular dip in field. Possibly quarrying



Plate 26 - 'Sheep-creep' in boundary wall between Fields 1 and 4



Plate 27 - View from northern boundary of Field 1



Plate 28 - View from northern boundary of Field 1



Plate 29 - View of Field 4 from northeastern corner of Field 1



Plate 30 - View towards Trehafod - tower/stack visible

Page 3 of 6



Plate 31 - Pile of stone, varying sizes; possible quarrying in Field 1



Plate 32 - Pile of stone, varying sizes; possible quarrying in Field 1



Plate 33 - View towards Trehafod - tower/stack visible



Plate 34 - View towards Pontypridd



Plate 35 - Overview of Field 8, The Garth in background



Plate 36 - 'Sheep-creep' in boundary wall between Field 8 and Field 9



Plate 37 - Round concrete drainage access structure with square 'Clark Drain Pedestrian' cast iron cover



Plate 38 - Round concrete drainage access structure with square 'Clark Drain Pedestrian' cast iron cover



Plate 39 - Round concrete drainage access structure with square 'Clark Drain Pedestrian' cast iron cover



Plate 40 - Gate at end of partly tarmacked track along southern edge of Field 9



Plate 41 - Culvert through wall in south-eastern corner of Field 9



Plate 42 - Overview of Field 15 towards Eglwysilan Mountain



Plate 43 - Culvert in centre of Field 17



Plate 44 - Boundary bank and wall at corner of Fields 41-4



Plate 45 - Views of The Garth (back, left) and Treforest (middle, right)

Page 4 of 6



Plate 46 - Views of Treforest across field 42, showing University of S. Wales (Centre)



Plate 47 - Boundary bank and wall between Field 41 and Field 43



Plate 48 - Boundary bank and wall between Field 41 and Field 43



Plate 49 - Views across Treforest towards The Garth and Flatholm (back)



Plate 50 - Overview of Field 37



Plate 51 - Views towards Pontypool and Pantygraigwen



Plate 52 - Views towards Treforest, showing University of S. Wales (Centre)



Plate 53 - Overview of Field 38, with sheep



Plate 54 - Exposure of bedrock, possible cave/shelter



Plate 55 - Exposure of bedrock, possible cave/shelter



Plate 56 - Slab of stone in Field



Plate 57 - Overview of Field 40 and Bryn Tail farm



Plate 58 - Close up of gate to Field 39 in disrepair



Plate 59 - Overview of Field 39



Plate 60 - Pile of stone north of Field 40, possibly being used to build/repair stone wall to west

Page 5 of 6



Plate 61 - Pile of stone north of Field 40, possibly being used to build/repair stone wall to west



Plate 62 - View of hillside north of Field 40



Plate 63 - Views across Field 23, with Tre-forest Tinplate works in centre distance



Plate 64 - Views of St Ilan's Church across Field 20



Plate 65 - Views across Field 20



Plate 66 - Northern boundary of Field 20: wall and bank



Plate 67 - Northern boundary of Field 20: wall and bank



Plate 68 - View across Field 18 across Tre-forest and Nantgarw towards Steephalm



Plate 69 - View across Field 18



Plate 70 - View across Field 18



Plate 71 - View across Field 18



Plate 72 - View along field boundary (bank/terracing) between Field 20 and Field 25



Plate 73 - Relict Field boundary (bank and ditch) crossing Field 25



Plate 74 - Overview of Field 32



Plate 75 - Northern stone wall boundary between Field 25 and Field 32

Page 6 of 6



Plate 76 - Overview of Field 33 and views towards The Garth



Plate 77 - Public footpath sign on northern boundary fence



Plate 78 - Public footpath route through ravine from Field 33 to Field 26



Plate 79 - Public footpath route through ravine from Field 33 to Field 26



Plate 80 - View of Field 26 across ravine from Field 33



Plate 81 - Views towards Field 27



Plate 82 - Views of Field 36



Plate 83 - Views of Field 36



Plate 84 - Overview of Field 23, with University of S. Wales and Newbridge Beam Engine (back)