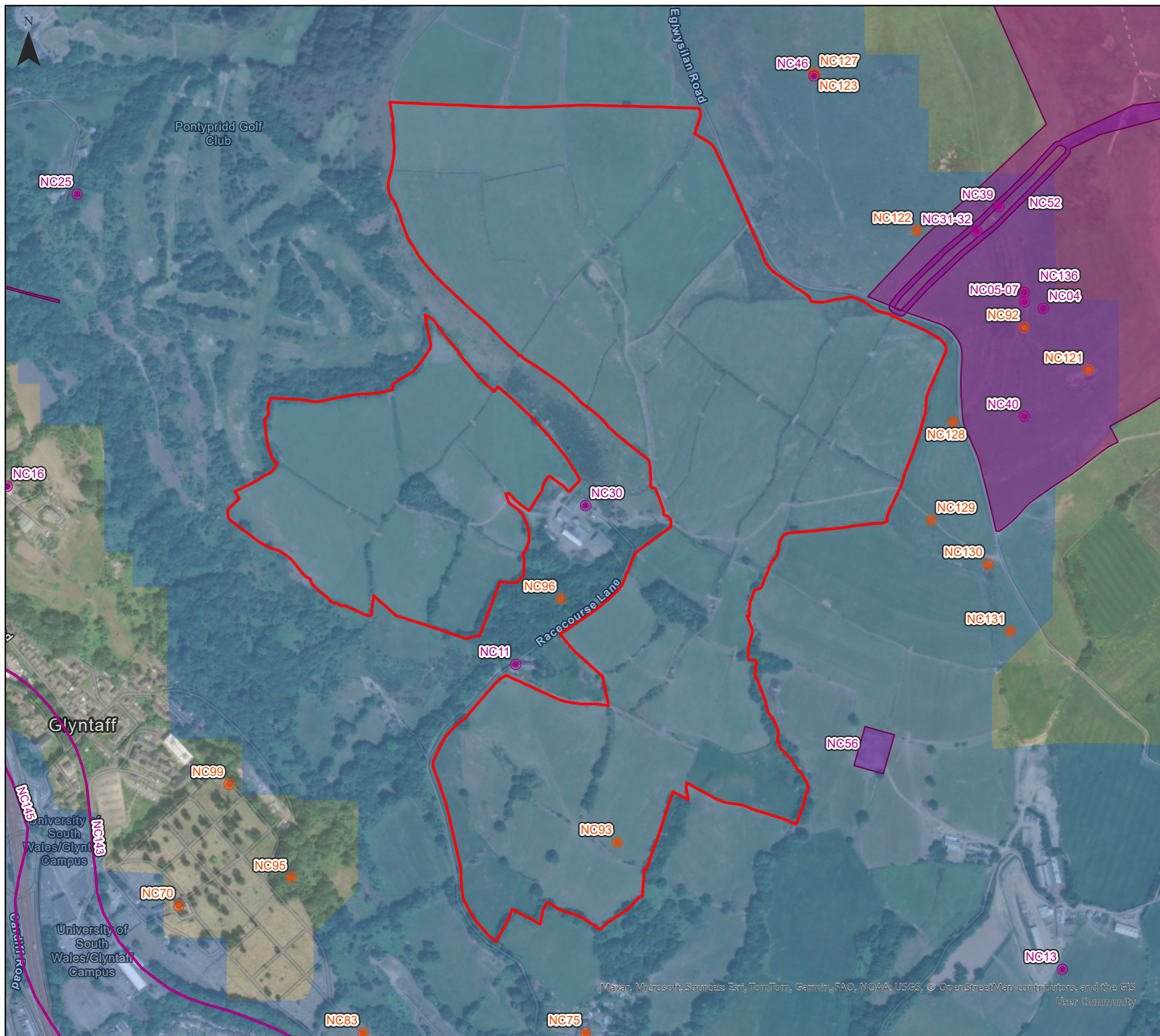


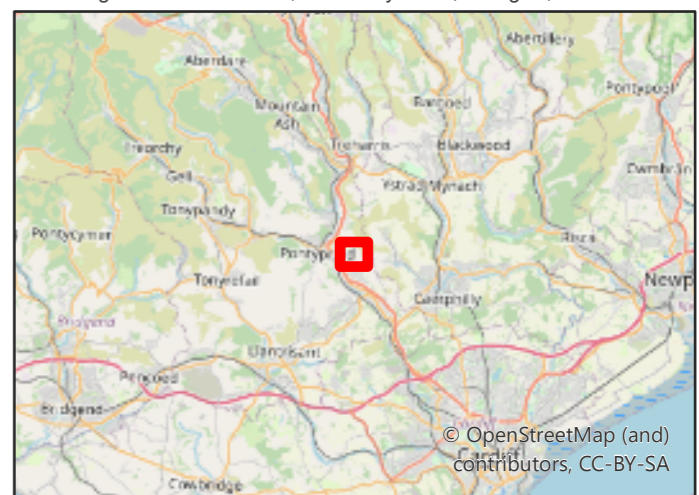
Glyntaff Solar Farm Heritage Assets in Close Proximity to Application Site Figure 10.4



Key

- Development Boundary
- 1km Study Area
- Heneb/GGAT Historic Environment Record (points)
- Heneb/GGAT Historic Environment Record (areas)
- National Monuments Record of Wales (RCAHMW/Coflein)
- Zone of Theoretical Visibility

Neo Office Address:
Wright Business Centre, 1 Lonmay Road, Glasgow, G33 4EL



Maxar, Microsoft, Sources: Esri, TomTom, Garmin, FAO, NOAA, USGS, © OpenStreetMap contributors, and the GIS User Community

Date: 16/07/2024
 Drawn By: Michael Briggs
 Scale (A3): 1:6,000
 Drawing No: NEO01437/0041/A

