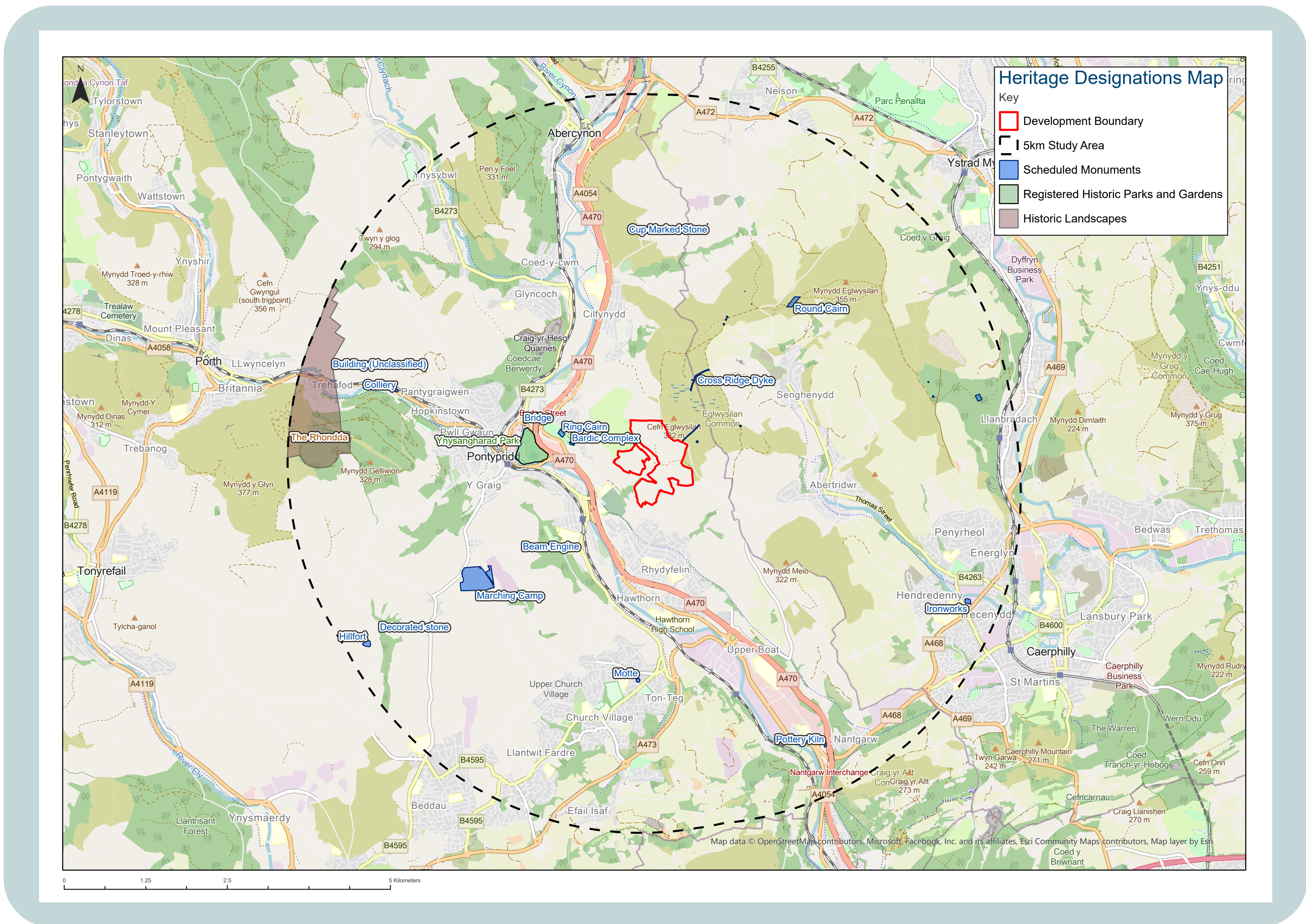


A stylized illustration showing a flock of sheep grazing in a field. In the background, there are rows of solar panels, suggesting a combination of agriculture and renewable energy. The illustration is composed of simple black outlines on a white background.

Archaeology



There are no designated heritage assets located inside the proposed development boundary.

There are a number of listed buildings within the nearby settlements of Glyn-Taff, Pontypridd and Treforest, which will be carefully assessed for potential indirect effects.

The site lies within a landscape containing recorded archaeological activity from the prehistoric period onwards, with the earliest such remains being several Bronze Age round cairns around the summit of Cefn Eglwysilan to the northeast and the Bronze Age scheduled monument 'Cross Ridge Dyke and Earthwork' adjacent to the east of the proposed development site. However, there are currently no known indicators for significant archaeological remains within the proposed development site itself, while land will be subject to archaeological evaluation methods to ascertain its specific archaeological potential.

There are two internal non-designated heritage assets; the remains of a former sheep wash and the (mislocated) record for the nearby village of Rhydyfelin.